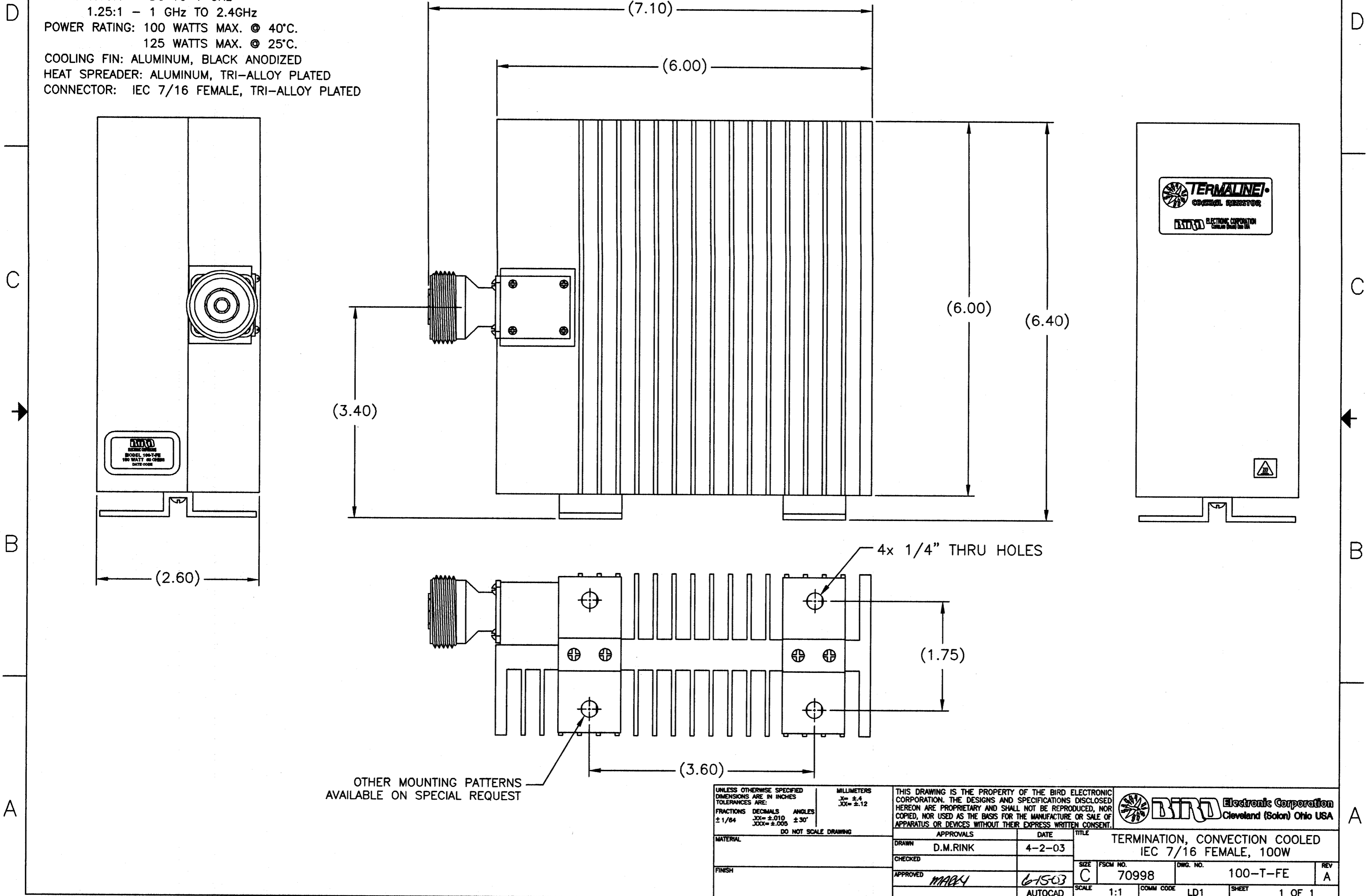


SPECIFICATIONS:

IMPEDANCE: 50 OHMS NOMINAL
 FREQUENCY RANGE: DC TO 2.4GHz
 VSWR: 1.10:1 - DC TO 1 GHz
 1.25:1 - 1 GHz TO 2.4GHz
 POWER RATING: 100 WATTS MAX. @ 40°C.
 125 WATTS MAX. @ 25°C.
 COOLING FIN: ALUMINUM, BLACK ANODIZED
 HEAT SPREADER: ALUMINUM, TRI-ALLOY PLATED
 CONNECTOR: IEC 7/16 FEMALE, TRI-ALLOY PLATED

REVISIONS		DWG. NO.	100-T-FE	SHEET	REV
ZONE	REV	DESCRIPTION	DATE	1	A
A		CONVERT TO BEC FORMAT	DMR	4-2-03	MW



UNLESS OTHERWISE SPECIFIED DIMENSIONS ARE IN INCHES TOLERANCES ARE:		MILLIMETERS X = ±.4 XX = ±.12		THIS DRAWING IS THE PROPERTY OF THE BIRD ELECTRONIC CORPORATION. THE DESIGNS AND SPECIFICATIONS DISCLOSED HEREON ARE PROPRIETARY AND SHALL NOT BE REPRODUCED, NOR COPIED, NOR USED AS THE BASIS FOR THE MANUFACTURE OR SALE OF APPARATUS OR DEVICES WITHOUT THEIR EXPRESS WRITTEN CONSENT.		BIRD Electronic Corporation Cleveland (Solon) Ohio USA	
FRACTIONS ± 1/64	DECIMALS XX = ±.010 XXX = ±.005	ANGLES ± 30°	DO NOT SCALE DRAWING		APPROVALS	DATE	TITLE
				DRAWN	D.M.RINK	4-2-03	TERMINATION, CONVECTION COOLED IEC 7/16 FEMALE, 100W
				CHECKED			SIZE PSCM NO. DWG. NO. REV
				APPROVED	MARV	6-15-03	C 70998 100-T-FE A
				FINISH		AUTOCAD	SCALE 1:1 COMM CODE LD1 SHEET 1 OF 1